

Parenting Class

If you were looking for a parenting class for your Clients? Here it is!!!

FYI

The YWCA

300 Main St.

Lewiston, Idaho 83501

208.743.1535

The YWCA will be offering a parenting class --starting Monday -- July 8th, 2013--6 to 8 PM for 6 weeks. The cost is 20.00 dollars. They will have a 1 or 2 week break and then start another 6 week class. This will continue throughout the year.

The Curriculum they are going to use is Active Parenting. The web site is www.activeparenting.com

Adult Learning Center Locations

LEWISTON

Clearwater Hall
400 Main Street
Lewiston, ID 83501

For class times and dates, please call
(208) 792-2238

GRANGEVILLE

Camas Prairie Pre-School
105 N. Myrtle
Grangeville, ID 85350

For class times and dates, please call
(208) 983-0202

MOSCOW

United Church of Moscow
123 W. 1st -Basement Level
Moscow, ID 83843

For class times and dates, please call
(208) 882-2898

OROFINO

The Coon Building
2000 Michigan Avenue
Orofino, ID 83544
(208) 476-5731

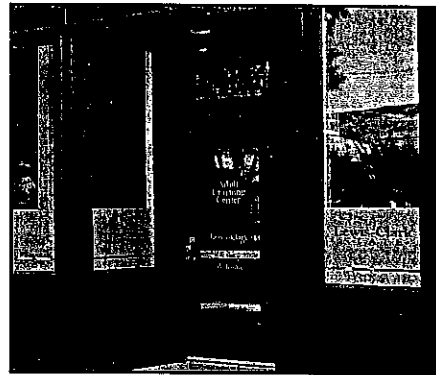
www.lcsc.edu/afe

Support for the cost of Adult Education and GED Preparation services is provided by the Idaho State Professional-Technical Division/Adult Education Office with Adult Education and Family Literacy Act funds.

This institution is an equal opportunity provider

TDD# (208) 799-5072

Adult Learning Center



Clearwater Hall
400 Main Street
(208) 792-2238

Lewis-Clark
S T A T E
C O L L E G E

Connecting Learning to Life

What Do I Do Next to Finish My GED?

Here's what you need to know regarding GED Testing when you are released from the North Idaho Correctional Institution.

- **Students can call 1-877-EXAM-GED** and provide their name, date of birth, corrections facility they took the test and the GED® call center will work with them to give access to their MyGED™ account
- If the student creates a MyGED™ account after being released and determines their scores earned while in correction facility aren't included in their account, they should call 1-877-EXAM-GED. A call center representative will verify the student's identity and merge both accounts into one. Students should be prepared to provide their name, date of birth and facility they tested and what test they've taken at the corrections facility.

Pearson vvc 1-866-389-3665

"SOLUTIONS"

HEALTHY RELATIONSHIPS & CHOICES -

DOMESTIC VIOLENCE TREATMENT & EDUCATION PROGRAM

THE 1ST AND 3RD WEDNESDAYS OF THE MONTH

12:00 NOON -3:00PM

LEWISTON COMMUNITY CENTER-

1424 MAIN ST, LEWISTON, IDAHO

NEW PARTICIPANTS MAY JOIN AFTER COMPLETION OF A REQUIRED APPLICATION PACKET & INTAKE SESSION. A DOMESTIC VIOLENCE EVALUATION MAY BE REQUIRED PRIOR TO ADMITTANCE TO THE GROUP.

THIS GROUP IS ONGOING, WITH 26 SESSIONS ATTENDANCE REQUIRED FOR GRADUATION

PLEASE CALL 208-777-7930 OR 208-691-6812 FOR INFORMATION

***FOR VETERANS COURT REFERRAL CONTACT LISA MARTIN**

@208-780-1748

INTAKE FEE \$25, BI-WEEKLY SESSIONS \$60 EACH OR

SLIDING FEE SCALE AVAILABLE

SPONSORED BY

SOLUTIONS AND MORE COUNSELING CENTER

SUSAN A. MANLEY LARSEN, LSW, LPC

IDAHO
DEPT. OF LABOR

Workforce Innovation and Opportunity Act

**This is your
OPPORTUNITY
to jumpstart
your career!**

Idaho Department of Labor
1158 Idaho St
Lewiston, Idaho

Contact:
Brenda Anderson
781-500-2358

WIOA Youth Program is accepting applications and has funding for:

PAID work experience and on the job training.

Pay for short term training, costs of tuition and other costs associated with work or school.

Pay for GED testing.

Pay for costs associated with job search.

Pay for work clothes or other items required by your employer.

Program serves eligible youth between ages 16-24 and must be an Idaho resident.

labor.idaho.gov

Idaho Department of Labor

C.L. "Butch" Otter, Governor · Kenneth D. Edmunds, Director



An Equal Opportunity Employer and Service Provider. Reasonable accommodations are available upon request. Dial 711 for TTY Idaho Relay Service.

Field Offices

Lewiston

1118 F Street – PO Drawer B

Lewiston, ID 83501

208-799-4440 (24 hours)

Moscow

1350 Troy Highway – Suite II

Moscow, ID 83843

208-882-0562 (24 hours)

Grangeville

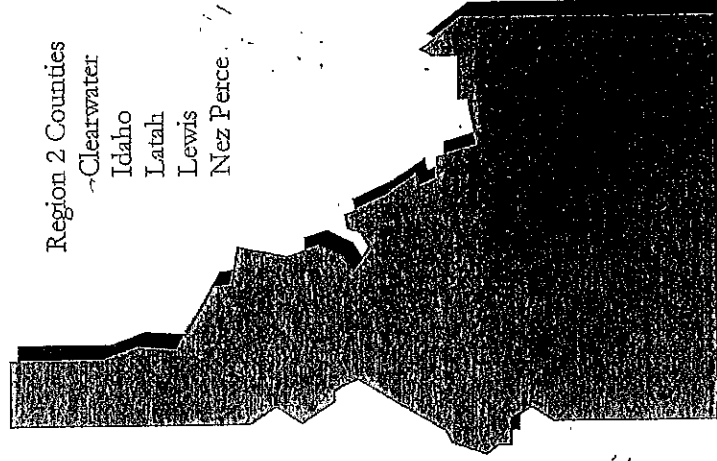
216 South C Street

PO Box 548

Grangeville, ID 83530

208-983-2300 (24 hours)

Adult Mental Health Services Information



Region 2 Adult Mental Health
Department of Health and Welfare
1118 F Street Drawer B
Lewiston, ID 83501



IDAHO DEPARTMENT OF
HEALTH & WELFARE

Mission

The mission of Region 2 Adult Mental Health is to actively promote and protect the social, economic, mental and physical health, as well as the safety of Idahoans. Integrity, customer service, and quality are the foundation for all Department of Health & Welfare activities.

We believe that all people are capable of recovery. Individualized services focus on restoring a meaningful sense of belonging and developing a positive sense of identity. Each person rebuilds their life within the limitations imposed by their mental health condition.

Region 2 Adult Mental Health is the safety net for our 5 county area and our priority is to ensure crisis services are available. Mental Health crisis services are offered on a 24 hour, 7 day per week basis. Crisis services are available over the telephone, in person, as needed, and in each office during business hours. Short-term crisis intervention and stabilization is offered to individuals experiencing mental health difficulties.

Admission to our State Hospitals is a collaboration with Region 2 mental health and state hospital staff, law enforcement, and local hospitals. Region 2 staff determines eligibility, coordinates admission, consults with state hospital

staff, and coordinates discharges from the State Hospitals.

Intake screening is provided for individuals 18 years and older with a severe and persistent mental illness or a co-occurring substance related and mental health disorder. Severe and persistent disorders impact a persons' ability to function. Without on-going psychiatric and recovery interventions, the individual is compromised in multiple areas and is at high risk for hospitalization. If an individual has insurance resources (e.g. Medicaid, Private Insurance, etc.) we provide assistance to access services in the community.

Assessment and services for individuals with court involvement may be ordered by the courts. Voluntary services are also available and are dependent upon type of illness as well as staff competencies and availability. Fees are determined on a sliding scale and discussed prior to all appointments.

Medication management service is offered to consumers needing assistance with psychiatric medication. This service includes receiving prescriptions, assistance in accessing medication, and medication monitoring.

People struggling to pay for medications may be eligible for help paying for their prescriptions. Our Patient Assistance

program help qualifying people with free or reduced medication cost.

Mental Health Courts

Mental health courts are an alternative sentencing program. The court closely supervises and monitors mentally ill adult offenders and oversees their treatment.

Assertive Community Treatment Services

The ACT team offers services to individuals who are severely, chronically mentally ill and are at high risk for, or are high users of hospital emergency room and inpatient services. The team provides intensive case management and psychosocial rehabilitation services. The goal of ACT team intervention is to enhance the quality of life for participants. The ACT team provides an environment where participants learn recovery skills to help avoid future hospitalization and live as independently as possible in the community.

Clinical Services

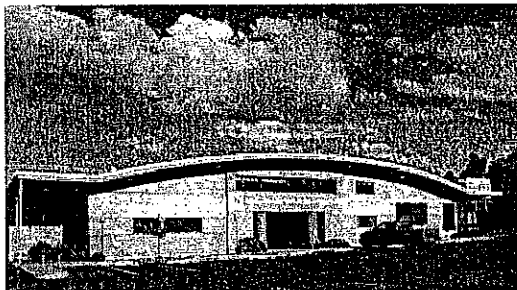
Supportive counseling; skill development; social and communication skills; and psychotherapeutic services are available for individuals. These services focus on recovery and may include psychiatric consultation, medications, psychological testing and evaluations. The goal for each consumer is maximum independence in the least restrictive setting.



[Home](#) | [Donate](#) | [Volunteer](#) | [Thank You](#) | [Map](#)

Snake River Community Clinic (SRCC)

215 10Th St. Lewiston, Idaho 83501
(208) 743-5899



SRCC is a free medical clinic for the uninsured and medically needy. We are funded by many generous benefactors including: Twin County United Way, Regence Blue Shield, PacificSource, Pathologists Regional Laboratory, Inland NW Community Foundation, and Idaho Community Foundation.

Hours of Operation

Open Tuesdays & Thursdays Only! First Come – First Served.

Spots for evening clinic given out at 2pm outside of NCDHD at 215 Tenth Street, Lewiston, ID. After you get a spot at 2pm, you then return at 5:30pm for the evening clinic. All patients are seen according to their needs. The most ill patients will be seen first. Your visit is free, and we have several labs and x-rays that are free. However, any services provided outside of the clinic (e.g., referrals, etc.) are not free.

No appointments made -- No spots saved!

The clinic is not a full-time or emergency clinic. All emergencies should go to a hospital emergency room.

We do NOT provide or write prescriptions for controlled substances. Do NOT ask!

DO NOT ENTER HEALTH DEPARTMENT ON CLINIC BUSINESS from 8am to 5pm.

Free Medical Clinic

The Snake River Community Clinic is a non-profit, free medical clinic for people who are uninsured, have a low income, and are not provided for through private insurance, Medicare, or Medicaid. They are the "working poor" – the minimum wage worker who is trying to provide food and shelter for their families, but who has no employer-provided health benefits, no money for health insurance, and limited money for medical care. There is no staff available to answer medical questions over the phone. All care will be provided on clinic nights only. Patients are responsible for all expenses related to labs, x-rays, and further referrals, which are not covered under agreements with the clinic.

MISSION STATEMENT

The mission of the Snake River Community Clinic is to provide basic health care in the Lewis-Clark Valley to the uninsured, medically needy, using volunteer professional staff.

VISION STATEMENT

The vision of the Snake River Community Clinic is to ensure that community members have resources to manage their health care needs.

Member of: Free Clinics of the Western Region and National Association of Free Clinics

For information on managing your diabetes, go to: www.diabetesresourceguide.idaho.gov

© Snake River Community Clinic (SRCC) 2000-2012

The Snake River Community Clinic, Inc. is a 501c3, nonprofit organization.
215 Tenth Street, Lewiston, ID 83501
Phone: 208.743.5899

Site Designed by Palouse Productions

Proud recipient of



Twin County United Way
Community Impact Funds

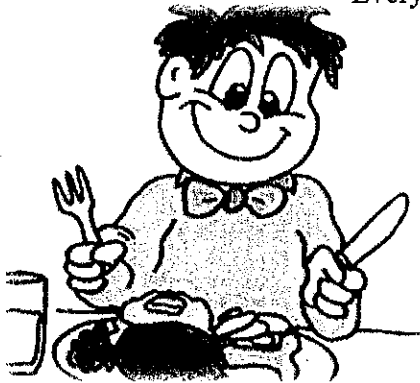
Schedule of Local Served Meals

Salvation Army

1220 21st Street, Lewiston, ID

5:00pm – 6:00pm

Every Monday, Tuesday, Wednesday and Friday



First Christian Church

5:00pm –

10th & Diagonal St. Clarkston, WA

Every Thursday of the month

The Episcopal Church of the Nativity

4:00pm to 5:30pm

721 8th Street, Lewiston, ID

Every 2nd and Last Saturday of the month

Good Shepherd Lutheran

5:00pm to 7:00pm

3707 14th Street Lewiston, ID (Orchards)

Every 3rd Saturday and last Saturday of the month

Granite Community Church "The Roxy"

5:00pm to 6:00pm

714 Main Street, Lewiston, ID

Every Sunday of the Month

The ROC

10:00am to 2:00pm

1803 6th Avenue North, Lewiston, ID

Monday through Saturday

Laundry Services Available

Clothing for Children and Adults

(Available as directed by ROC Staff)



Idaho Department of Correction
Latah County Resource Guide

Some of these resources do cost a fee

Housing

Indigent-

Latah County Sheriff's Office (208)882-2216, 522 S. Adams Moscow Idaho 83843
Sojourners Alliance (208)883-3438, 627 N. Van Buren Moscow, Idaho 83843

Low income

Creekside Apartments (208)883-3181, 1603 S. Main Moscow, Idaho 83843
Oakridge Apartments (208)882-3224, 1218 S. Main Moscow, Idaho 83843
McConnell Apartments (208)882-0639, 104 S. Main #105 Moscow, Idaho 83843
Independence Hill (208) 882-0951, 1500 W. A. St. Moscow, Idaho 83843
Russet Square (208)882-7553, 231 Lauder Ave, Moscow, Idaho 83843
Camas Village (208)882-9604, 1875 E. White Ave, Moscow, Idaho 83843
Hawthorne Apartments (208)882-3516, 1420 Hawthorne Drive Moscow, Idaho 83843
Ray Ann Apartments (208)882-2599, 404 S. Grant St. Moscow, Idaho 83843
Eggon Apartments (208)301-4437

Assistance

Idaho Housing and Financial Association (208)743-0251, 215 S. 10th St. Lewiston, ID 83501
Palouse Habitat for Humanity (208)883-8502, 822 S. Elm Moscow, Idaho 83843

Food

Church of the Nazarene (208)882-4332, 1400 E. 7th St. Moscow, Idaho 83843
St. Mary's Catholic Church (208)882-4813, 618 E. 1st Moscow, Idaho 83843
Bovill Food Bank (208)826-3247, 405 4th Ave, Bovill Idaho
Deary Food Bank (208)877-7414, 405 Main St. Deary, Idaho
Genesee Food Bank (208)285-1195, 732 W. Walnut Genesee, Idaho
Good Samaritan Food Bank (Kendrick) (208)276-4510, 614 E. Main St. Kendrick, Idaho
Potlatch Food Bank (208)875-0708, 195 6th St. Room# 102 Potlatch, Idaho
Troy Food Bank (208)835-4352, 102 6th St Troy, Idaho
W.I.C. 211, 1350 Troy Road Moscow, Idaho 83843
Emergency Food 211, 1350 Troy Road, Moscow, Idaho 83843
Food Stamps (208)882-7571, 1350 Troy Road Moscow, Idaho 83483

Counseling Services

Department of Health and Welfare (208)882-7571 1350 Troy Road Moscow, Idaho
Adult Mental Health (208)882-7571 1350 Troy Road Moscow, Idaho
Weeks and Vietri (208)882-8514, 818 S. Washington St. Moscow, Idaho 83843
Alliance Family Services (208)882-5960, 317 W. 6th St. Moscow, Idaho 83843
Suicide Prevention 24 hours (208)273-8255
University of Idaho Counseling Center (208)885-6716, 1210 Blake Ave Moscow, Idaho

Health and Welfare (208)882-6902, 1350 Troy Road Moscow, Idaho 83843

Food Stamps 1(877)456-1233
Family Services (208)882-0670

Mental Health (208)882-0562
Medical 1(866)326-2485
Home Heating 1(866)326-2485
Medicaid 1(866)326-2485
W.I.C. (208)882-7506
Telephone help 211
Child Care 211
Emergency food (208)882-6902
Suicide Prevention Lifeline (208)273-8255

Labor/Employment

Workforce Investment Act (208)882-7571, 1350 Troy Road Moscow, Idaho
Trade Act Assistance (208)882-7571, 1350 Troy Road Moscow, Idaho
Department of Labor (208)882-7571, 1350 Troy Road Moscow, Idaho
Hope Center (208)882-4144, 1212 W. Pullman Road Moscow, Idaho
University of Idaho Career Center (208)885-6121, Idaho Commons room 334 Moscow
Vocational Rehabilitation (208)882-8550, 317 W 6th St, room 210 Moscow, Idaho

Transportation

Free

Moscow Valley Transit (208)883-7747, 1424 Main St. Lewiston, Idaho
Dial-a-ride (Medicaid and Medicare free) (208)883-7747, 1424 Main St. Lewiston
Dept. of Health and Welfare (appointments only) (208)882-6902, 1350 Troy Rd Moscow
C.O.A.S.T. (800)957-2899
Medicaid Transportation (877)505-1261

Fee

Dial-a-ride (208)883-7747 1424 Main St. Lewiston, Idaho
Wheatland Express (509)334-2200,
Pegasus Taxi (208)874-7500
A-Z Taxi (208)882-6141
Classic Cab (208)669-0744

Disability Services

Disability Action Center (208)883-0523, 505 N. Main Moscow, Idaho
211
Vocational Rehabilitation (208)882-8550, 317 W. 6th St. room #210 Moscow, Idaho
U of I Disability Support Services (for UI students) (208)885-6307, Idaho Commons room #306

Financial Help/Budgeting classes

Idaho Department of Insurance (seniors only) (800)488-5725
Hope Center (208)882-4144, 1212 W. Pullman Rd. Moscow, Idaho
Weeks and Vietri (208)882-8514, 818 S. Washington St. Moscow, Idaho
Consumer Credit Counseling (800)556-0127

Clothing

Goodwill (208)882-4373, 201 Warbonnet Drive Moscow, Idaho 83843

Hope Center (208)882-4144, 1212 W. Pullman Rd Moscow, Idaho 83843
Salvation Army (208)883-4812, 315 S. Jackson Moscow, Idaho
Church of the Nazarene (208)882-4332, 1400 E. 7th St Moscow, Idaho

Adult Services

Area Agency on Aging and Adult Services (1-800-877-3206)
Adult Protection Services (1-800-877 3206)
Idaho Senior Legal Hotline (1-866-345-0106)
Latah County Court Assistance (208-882-8580) 522 S. Adams St. Moscow, Idaho 83843
Medicare Reimbursement Information (1-800- 627 2782)
Social Security Administration (1-800-772-1213), 1617 19th Ave Lewiston, Idaho 83501
Latah County Social Services (208-882-8580) 522 S. Adams St. Moscow, Idaho 83843

Legal Assistance

Idaho Legal Aid Service (208)743-1556, 633 Main St. Lewiston, Idaho 83501
Latah County Court Assistance Information (208)882-8580, 522 S. Adams St. Moscow
University of Idaho Legal Aid Clinic (208)885-6541, Law Building UI campus
Idaho Volunteer Lawyers (800)221-3295

Health

Benewah Medical and Dental (208)686-1931, 1115 B St. Plummer, ID 83853
Snake River Community Clinic (208)743-5899, 215 10th St Lewiston, Idaho 83501
Lewis and Clark Health (208)848-8300, 3386th Ste. 101 Lewiston, Idaho 83501
Lewis and Clark Dental (208)848-8308, 3386th Ste. 101 Lewiston, Idaho 83501
North Central Health District (208)882-7506, 333 E. Palouse River Dr. Moscow, Idaho
Medicaid Medical (866)686-4752
Medicaid Pharmacy (888)773-9466
Medicaid Dental (800)936-0978
Medicaid Transportation (877)505-1261
Gritman Medical Center ER (208)882-4511, 700 S. Main St. Moscow, Idaho 83843
Quick Care (208)882-0540, 2500 W. A St# 101 Moscow, Idaho 83843
Veterans Services Latah County (208)883-2274, 522 S. Adams Moscow, Idaho 83843
Veterans Affairs Clinic (208)746-7784 1630 23rd Ave. Stes 302 and 401 Building 2 Lewiston

Power Assistance

Avista Energy Assistance (866)674-6327
Low Income Home Energy Assistance Program 211

Domestic Violence

Wilson Psychological Services (509)334-0782, 1240 S.E. Bishop Blv. Pullman, Wa
Alternatives to Violence of the Palouse (877)334-2887

Sex Offender Housing

Hillcrest (208)882-7579
Team Idaho Property Management (208)882-5484, 103 East 2nd St. Moscow, Idaho 83843
Welcome Home Property Management (208)882-8391, 805 N. Main St. Moscow, Idaho 83843

Sex Offender Treatment

Valley Treatment Specialties (509)758-1026, 715 ½ Elm St. Clarkston, Wa 99403

IDOC

Summer Overberg (208)799-5030 ext 106

Gary Kiss (208)799-5030 ext 117

Probation Officer Blaine Holman (208)883-3549

Sr. Probation Officer Clint Hoiland (208)883-3547

Joe Gara (208)799-5030 ext 111 (for GED assistance)

District Manager Scott Douglass (208)799-5030 ext 103

Section Supervisor Renee Behrens (208)799-5030 ext 110

NEED HELP?

DIAL 2-1-1

FOR SOCIAL SERVICES LIKE:

- Rental Assistance
- Free Tax Preparation
- Food and Clothing
- Medical Assistance
- KinCare/Relative Care
- Counseling/Support Groups
- Child Care Resources
- Volunteer Opportunities
- Emergency Shelter
- and more . . .

CONNECTING PEOPLE WITH SERVICES:

We connect callers with community programs that help keep families safe, healthy, and self-sufficient.

- One call gives you access to community resources across Idaho.
- All calls are free and confidential.
- Search services online at www.211.idaho.gov
- Se habla **español**

Idaho CareLine ★

2-1-1TM

Get Connected. Get Answers.

I D H W • United Way

Dial 2-1-1 or 1-800-926-2588

8 a.m. – 6 p.m. (MST)
Monday–Friday

*To access TTY services
call (208) 332-7205